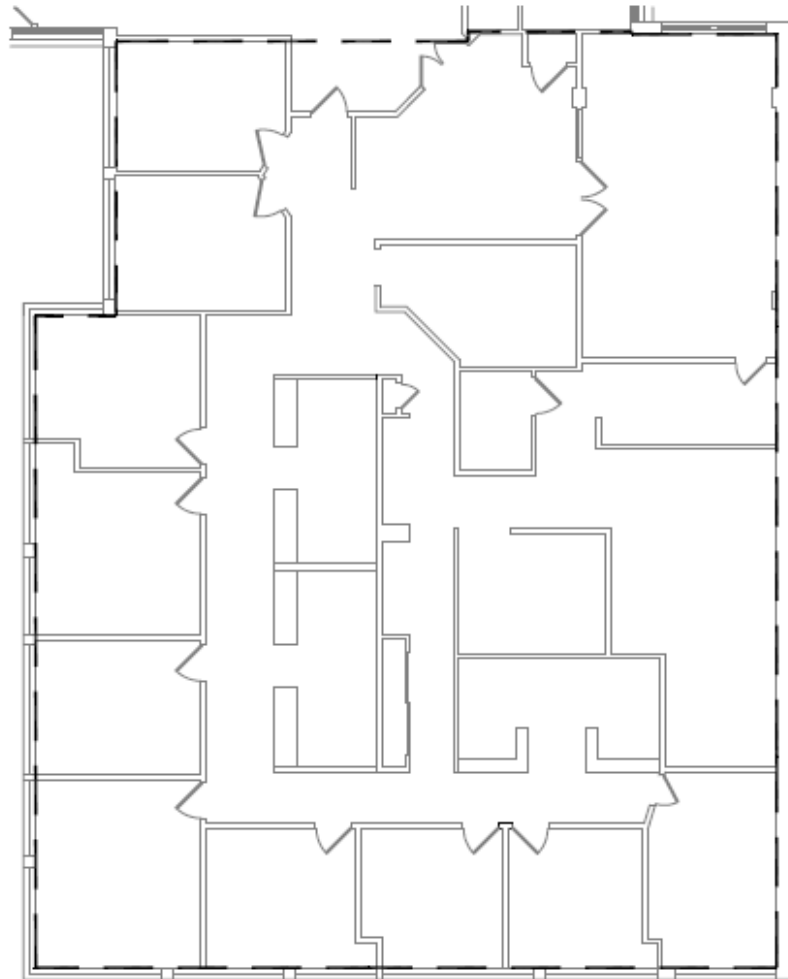


1 PALMER SQUARE, PRINCETON

FOR LEASE

Suite 515- 5,215 SF



CONTACT:

Peter Dodds
609 452-8880 x101
609 529-4920 cell

Livingston Johnson
609 452-8880 x110
609 306-4466 cell

Procuring broker shall only be entitled to a commission, calculated in accordance with the rates approved by our principal only if such procuring broker executes a brokerage agreement acceptable to us and our principal and the conditions as set forth in the brokerage agreement are fully and unconditionally satisfied. Although all information furnished regarding property for sale, rental, or financing is from sources deemed reliable, such information has not been verified and no express representation is made nor is any to be implied as to the accuracy thereof and it is submitted subject to errors, omissions, change of price, rental or other conditions.