

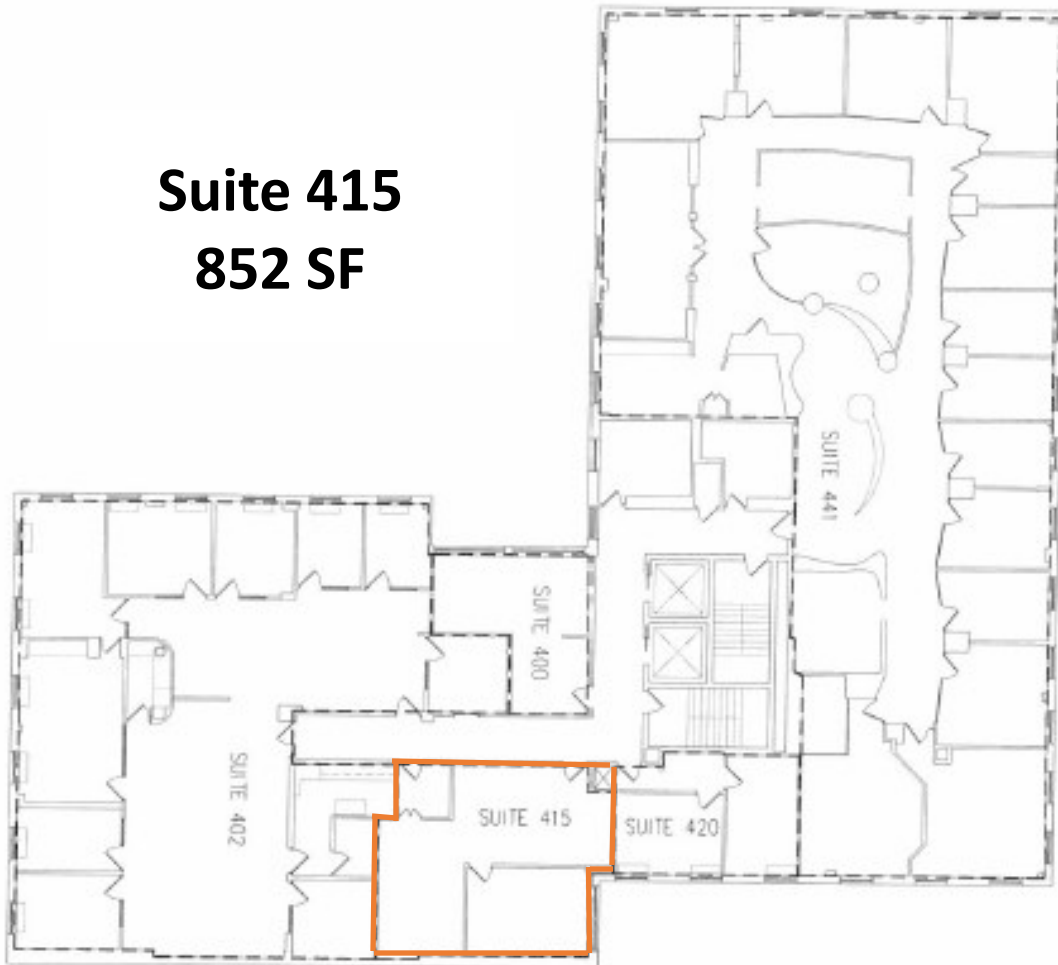
# 1 PALMER SQUARE, PRINCETON

## FOR LEASE

PALMER SQUARE

**Suite 415**  
**852 SF**

NASSAU STREET



### CONTACT:

**MORFORD  
& DODDS** *realty*  
COMMERCIAL REAL ESTATE ADVISORS

**Peter Dodds**  
609 452-8880 x101  
609 529-4920 cell  
pdodds@m-drealty.com

**Livingston Johnson**  
609 452-8880 x110  
609 306-4466 cell  
ljohnson@m-drealty.com

Procuring broker shall only be entitled to a commission, calculated in accordance with the rates approved by our principal only if such procuring broker executes a brokerage agreement acceptable to us and our principal and the conditions as set forth in the brokerage agreement are fully and unconditionally satisfied. Although all information furnished regarding property for sale, rental, or financing is from sources deemed reliable, such information has not been verified and no express representation is made nor is any to be implied as to the accuracy thereof and it is submitted subject to errors, omissions, change of price, rental or other conditions.